



**Brain Care Centre®**  
*Defy Limitations!*



## **ANNUAL REPORT 2014-2015**

**Stephanie Boldt  
Board President**



Greetings from the Board of Directors of Brain Care Centre (“BCC”). Another year has passed and BCC continues to grow through the opportunities and challenges that have been presented throughout the year. I am reminded of the importance of BCC not only as I listen to the client testimonials, but also as I travel to other regions where there is limited support for adults with brain injury. Often I am asked questions on the programs BCC offers and if I know of similar organizations. That being said, there are still many in Edmonton and area who are not aware of our services and BCC continues in its mandate not only to work with the brain injury community, but also to educate the community at large on brain injury.

In the past year, BCC has been able to grow the concussion program by hiring a Concussion Outreach Facilitator and we continue to see the opportunities for that program and continue to seek out partners that will facilitate that development. The past year was also a reminder of our vulnerabilities as a service organization, as we are dependent on the remarkable work of the BCC staff and volunteers. Although life has brought different challenges, I was impressed to see the staff show their colleagues the kind of community support that they provide to the clients every day. These challenges have also given BCC the opportunity to evaluate the organization’s succession planning and review its risk assessment, something that continues to evolve within every organization.

As the Board continues to transition from those who hold

the history, to those who will hold its future, I want to thank each member for their dedication to BCC. For those that have served since the formation of BCC, and on the Boards of the predecessor organizations, your steadfast determination to the mission of BCC has provided a strong foundation, unwavering support, and guidance for the organization. To the new Board members, I know that your passion and enthusiasm is going to allow BCC to grow and adapt to the future. As the BCC Board embarks on strategic planning this fall, I am confident that the combination of the knowledge of the past and the vision of the future will effectively guide BCC forward.

For my last term on the Board I will be moving into the Past President role and am excited to have Quentin Ranson transitioning into the President role. As an Occupational Therapist at the Glenrose Rehabilitation Hospital, Quentin is very involved in the brain injury community. He is a great advocate as well as an excellent resource and support for the staff at BCC. As I pass the torch, I would like to thank each person who has served alongside me during my terms as President, both of BCC and predecessor organization, Edmonton Brain Injury Relearning Society. I have had the opportunity to work with so many different people, whether other Board members, staff, or volunteers, and each has taught me so much. Finally, I want to thank each of the clients and their caregivers for their courage and inspiration. Whenever I became tired or overwhelmed with the different responsibilities of my role, one testimonial or story was enough to remind me that I have been given an opportunity to be part of something bigger than me: the opportunity to be part of a community that is working together every day to defy the limitations of brain injury. What a privilege to serve the community in that way.

**PRESIDENT’S REPORT**

**President’s Report by *Stephanie Boldt* - 2**

**BCC Mission and Vision,  
Executive Director Report  
*Dr. Garnet Cummings* - 3**

**Faces and Voices of BCC - 4, 5**

**Volunteer Involvement 2014-2015-13**

**Annual General Meeting 2014 -6**

**BCC Award Recipients - 7**

**BCC Organizational Chart - 8, 9**

**Client Service Report - 10, 11**

**Fundraising Events 2014 - 2015 - 12, 13**

**Thanks to Donors and Supporters -14, 15**

**Staff and Board Directory - 16**

**CONTENTS**

**Dr. Garnet Cummings  
Executive Director**

This last year marks the completion of the first strategic plan initiated in 2011 during the amalgamation of the Northern Alberta Brain Injury Society (NABIS) and the Edmonton Brain Injury Relearning Society (EBIRS). During the inaugural strategic planning session, the Board outlined the major objects of the society that are stated in our bylaws.

*The objects of the Amalgamated Society shall be as follows:*

- *To provide a one-intake system for people who have a brain injury and their family members, including:*
  - Assessments for individuals;
  - Cognitive rehabilitation services for individuals;
  - A support network for individuals and their family members through supportive counseling and peer support opportunities;
  - A learning environment to promote independence; and
  - Life skills retraining services.
- *To raise public awareness and provide education on the issues surrounding brain injury, its prevention and the people it impacts;*
- *To play an advocacy role at a personal and service systems level and provide information and assistance to individuals and family members in advocating for an optimal lifestyle; and*
- *To promote the development of policies, supports and services that will optimize the quality of life of individuals and families living with the effects of brain injury.*



I feel that in the last four years we have met and exceeded the objects outlined in the bylaws. This next year marks a new chapter in the evolution of the Brain Care Centre. The objects will always be at the heart of what BCC strives for. The management team has started working towards a new strategic plan under the leadership of Mrs. Terry Fung. This process has begun with interviews of the management team on their thoughts on the direction that BCC should take over the next five years. It will then move to frontline staff interviews in Edmonton, Edson and some third party providers. The strategic planning process will culminate with a board retreat in the fall, where the opinions of the management team, from line staff and Board will blend to determine the direction of BCC until 2020.

To support the renewed Strategic Plan, the proposed strategic directions (2015-2020) are listed below:

**Strategic Direction 1 – Leadership:** Brain Care Centre (BCC) will be a leader in supporting individuals who have acquired a brain injury.

**Strategic Direction 2 –Regional Service Coordination and Support Services:** Brain Care Centre (BCC) will provide a single point of entry into a continuum of supports for clients with acquired brain injury and their families.

**Strategic Direction 3 Awareness and Education:** Brain Care Centre (BCC) will raise public awareness and provide education on the issues surrounding brain injury, its prevention and the people it impacts

**Strategic Direction 4 – Advocacy:** Brain Care Centre (BCC) will advocate for the needs of persons with acquired brain injury and their families through client-driven partnerships and linkages.

**Strategic Direction 5 - Quality of Life:** Brain Care Centre will improve the quality of life of those served through creating supportive environments that empower individuals, their families and the broader community to Defy Limitations.

Through this process, BCC will have a direction for the next five years, key measurable milestones and assigned accountabilities and outcomes that can be measured.

## VISION

As the leader for excellence in brain care, we *Defy Limitations!*

## MISSION

We will be a source of hope for those impacted by brain injury, in providing a compassionate continuum of brain care services from prevention to reintegration.

We will evolve client-driven partnerships & linkages, and educate the community about comprehensive brain care.

## CORE VALUES

We provide *courageous leadership* through *dedicated, empathetic, and accountable* Professionals.

We treat individuals with *dignity* and *respect*.

We maximize individual *potential* through *compassionate, evidence-based* and *innovative* programs and services.

We empower others to *Defy Limitations!*



## How do programs run by Brain Care Centre impact your life?

*BCC extends thanks to those who submitted their statement for use in our AGM report.*



*"Learning in the Assistive Device Training Program has been a pleasurable fun experience!"*

*- Eugene Tremblay*



*"Recovery after brain injury sometimes takes longer than you think. A broken bone may heal itself, but a brain injury will take more to recover. You need to compensate your loss, get the necessary help and guidance in order to bring out the best of yourself."*

*- Gordon McMillan*



*"Brain Care Centre is special to me because of the compassion and kindness of the people that work there and go there."* - Linda Robillard

*"The Brain Care Centre has been a lifesaver for our family, encouraging my husband's efforts to learn about his brain injury and to adapt and grow and supporting me as his caregiver. We are deeply indebted for everything BCC has done for us."*

*– Shirley Hall*

## Farewell to BCC Board Members

BCC bids a fond farewell to three of its Board members who have long service records with the agency. Ryan Barry, Bruce Hirsche and Fran Zinger have given notice that they will be moving on after the AGM, September 16, 2015. Ryan Barry joined the Board just prior to the amalgamation, in February, 2011. He has been a stalwart member of the Finance Committee. Bruce Hirsche joined the NABIS Board in 2004 and was instrumental in steering the NABIS/EBIRS amalgamation April 2011. His legal expertise has been willingly provided whenever asked. It was particularly valuable when registering BCC's trademarks. Bruce's willingness to carry on his brother's, Pat Hirschi's legacy (NABIS' President), after his death, has been touching and wonderfully supportive. Frances Zinger, recipient of BCC's 2015 Patrick Hirschi Lifetime Achievement Award, joined NABIS' Board in December 2006. She has provided legal expertise, assisted in fundraising endeavours in every way and with infectious enthusiasm, has been a tremendous support to the NABIS/BCC team. These individuals exemplify the best of what community service means to the non-profit world. BCC extends our sincere gratitude for all their contributions and wishes them well in their future endeavours.



***Board Members who are the  
BEST of Sports!***

***Bruce leads the coin flip game  
(left) and Fran breaks the moves  
(right) at the February 2015  
Defying Limitations Gala***



## What does Volunteering at BCC mean to you?

***"I volunteer in emulation of my hero, Superman, a symbol of hope, so that I, too, may offer hope and help to improve the lives of others. Volunteering with Brain Care Centre has been a wonderful experience thanks to the support and dedication of the amazing staff." - Mark Stevens***

***"I had an amazing time and was super glad I found you guys, I couldn't of asked to volunteer for a better group :)" - Dave Davies***



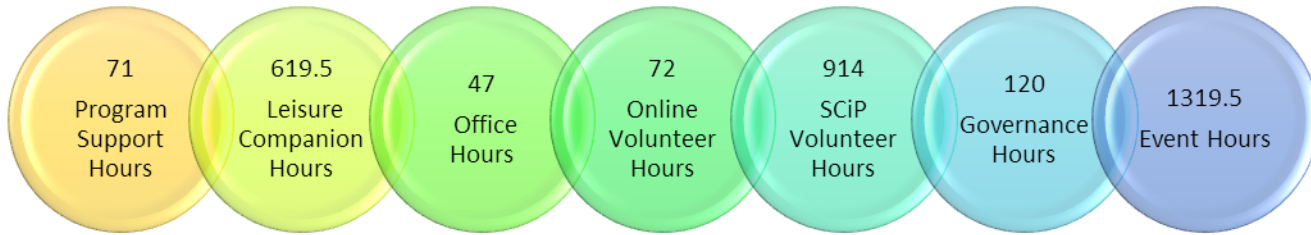
BCC Volunteers: Lorne (left) and Carol (right) braving the cold at the Brain Matters Charity Golf Tournament

***"All three of my experiences with [BCC] this year have been absolutely wonderful - and often emotional [...] I have had a great 6 months doing about 11 events, some that extended over more than 1 day - yours has been one of the most gratifying and I must add, so well run 'internally.'" - Carol Lehman***

***"I enjoy co facilitating and preparing for the Women's group. The women teach me so much by their life and their spirit. It is an honor to be a part of their journey." - Lizbeth Mendonca***



Janine Tremblay  
Former Volunteer Coordinator



**Total Hours: 3724**

## VOLUNTEER ACCOMPLISHMENTS

*Based on the pricing categories for each volunteer position, support was calculated using the median pay according to [www.payscale.com](http://www.payscale.com). In Canadian dollars, our volunteers have donated over \$62,880.81 worth of time, labour and skill to Brain Care Centre. We are so proud to be backed by such an amazing team of people. Thank you for your support.*



## VOLUNTEER AWARDS

**Carley Borza**  
Superhero Award Recipient  
2014-2015

**Kalina Askin**  
Outstanding  
Service Award  
Recipient  
2014-2015

**Janine Tremblay**  
Former BCC  
Volunteer  
Coordinator

**Jenny Pasterfield**  
Leader of Tomorrow  
Recipient 2014-2015

### 2014 Ginny Award for Outstanding Caregiver



**Barb & Adam Eckert**

### 2014 Ginny Award for Community Support



**Claudia Berwald**

### 2015 Patrick Hirschi Lifetime Achievement Award

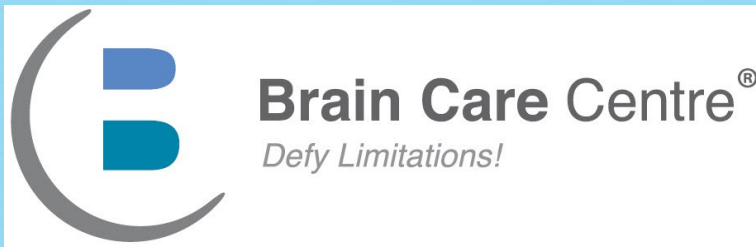


**Frances Zinger**

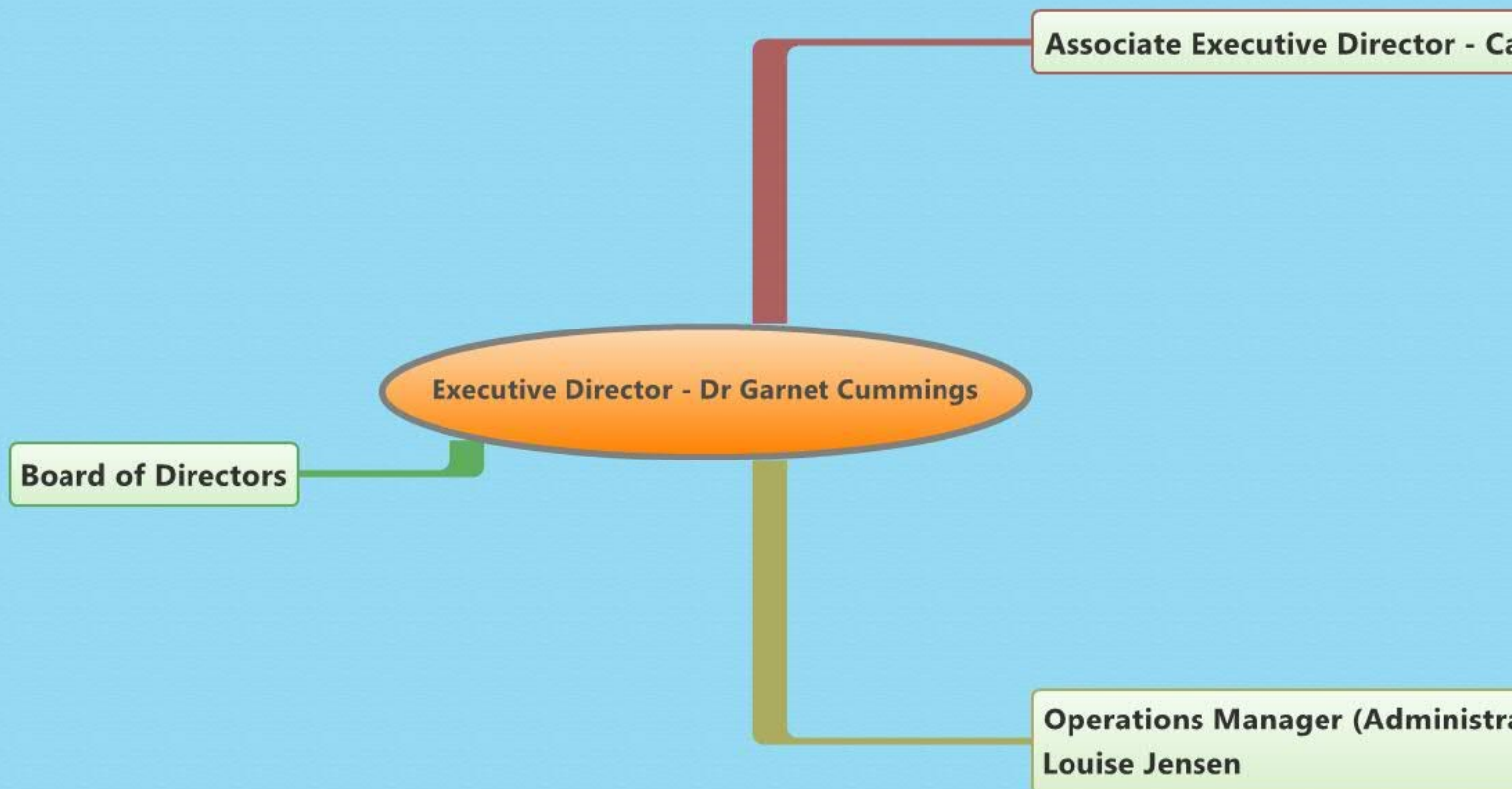
The 2015 Patrick Hirschi Lifetime Achievement Award was presented to Frances Zinger. Fran has devoted a significant part of her career and her life to preventing brain injury and improving the quality of life of people with acquired brain injury.

Like Patrick Hirschi, Fran is a community leader, advocate and mentor to others in the many causes that she supports. She is a lawyer who graduated from the University of Alberta Law School in 1975. She's had a distinguished career and is currently a partner in the Edmonton law firm of Cummings Andrews Mackay. She is a long-time Director and leader of several organizations including: the Northern Alberta Brain Injury Society, where she sat on the board with Patrick for four years, the Brain Care Centre, as well as Hockey Alberta. Fran is a devoted wife, mother and friend to many.

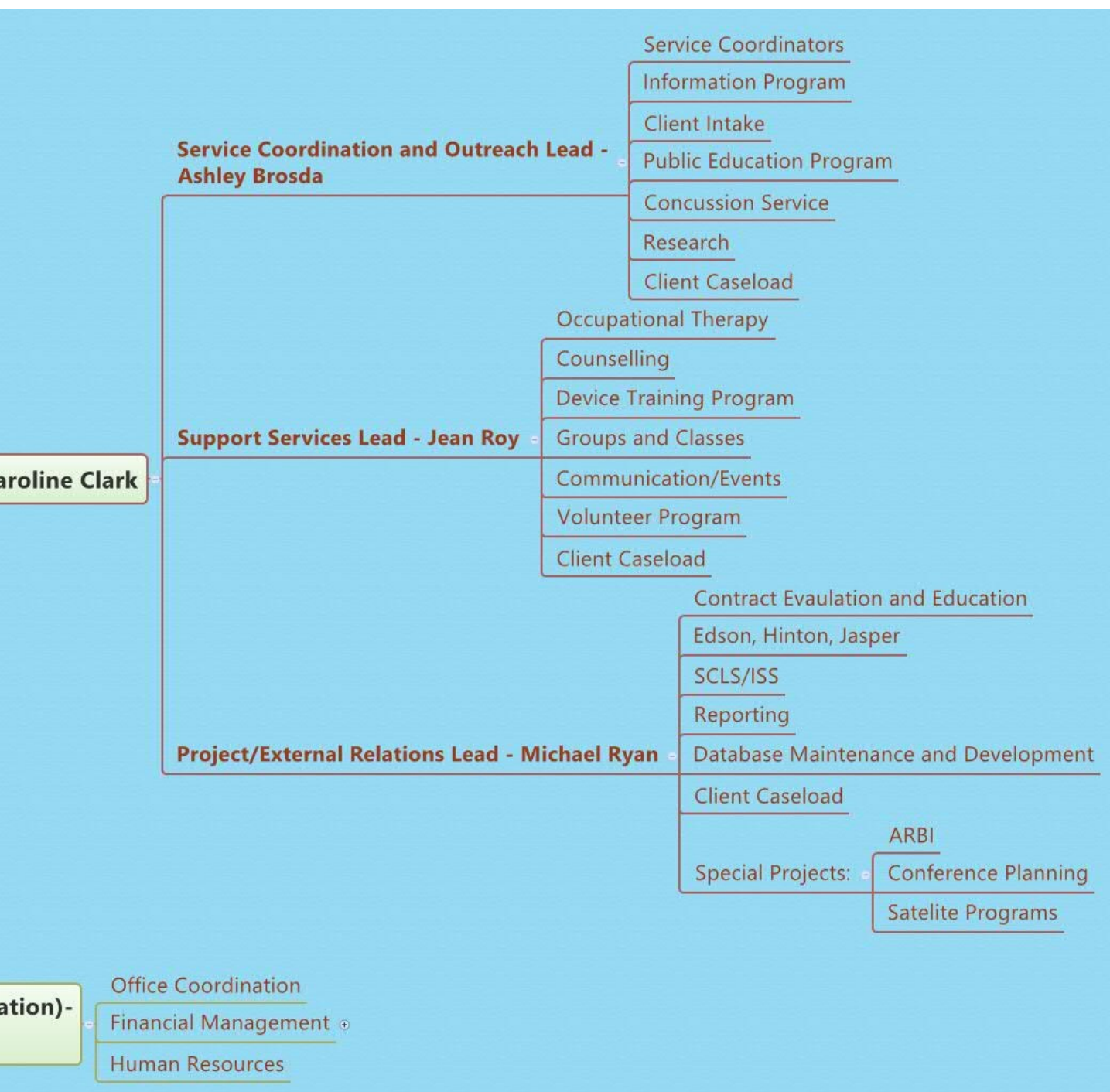
Fran Zinger joins Dr. Keith Aronyk, Bill and Mufty Matthewson and Dr. Julianna Nagy as the latest recipient of the Patrick Hirschi Lifetime Achievement Awards.



*Effective April 2015*







## BCC Programs and Services Year In Review

By Michael Ryan



The April 2014 to March 2015 year was characterized by a fair degree of change both in terms of staffing and in terms of program development/enhancement. Client services staff continued to perform magnificent, client-centred work. BCC thanks Alberta Human Services and Alberta Health Services whose ongoing funding make possible these programs and services.

### ANNUAL SERVICE ACTIVITY

There were 610 participants in BCC programming over the course of the fiscal year. 359 of these were active participants. Males make up the majority of clients served. The average age at admission is 48.7 years for females and 45.6 years for males.

Covering all programming areas at BCC, the top 5 client needs and issues over the year were:

1. Social Emotional Needs
2. Managing Daily Living Activities
3. Links to Community Support Services
4. Physical Health Needs
5. Leisure Skills

All BCC services receive referrals exclusively through Service Coordination. Outcome measurements indicated that clients clearly benefitted from BCC's client services programming.

### SERVICE COORDINATION

Service Coordination was, and continues to be, the linchpin service of BCC. Clients accessed Service Coordination through the Intake Coordinator. From there, Coordinators streamed clients into the appropriate programming whether external (e.g., SCLS, housing, funding, rehabilitation resources etc.) or internal (BCC's O.T, counseling, Volunteer or Assistive Device Training Program) based on needs/goals identified in the client's individual service plan (ISP).

In terms of challenges, affordable housing continued to be a problem in the Edmonton and Edson regions. Many clients had little to no money left over after they paid their rents. The location of many of the more affordable housing units was frequently inaccessible. Most of the less expensive housing options were basement suites that clients with limited mobility issues could not access. With AISH increases a few years ago, landlords raised their rental rates, seemingly in response.

In a similar vein, it was noted that it became increasingly difficult for clients to receive AISH benefits. AISH

adopted more stringent acceptance criteria. This resulted in many client applications being rejected and going into the appeal process which was often very drawn out. Nevertheless, Coordinators in both Edmonton and Edson offices assisted clients to apply for (notably, in an increasing number of cases, successfully appealing rejections) and ultimately receive AISH benefits. Additionally, coordinators worked very closely with SCL workers, client guardians, trustees and even financial institutions to more fully enhance client community reintegration. Indeed, while finding quality, affordable housing for clients remains challenging work, coordinators through both persistence, advocacy and the establishment of effective community professional networks, were able to help clients acquire and maintain housing and other significant resources. Coordinators also provided various public education sessions in the Edmonton and Edson regions. On a final note, Coordinators in both Edmonton and Edson worked with Supports for Community Living Services (SCLS) as part of the Alberta Brain Injury Network service delivery paradigm. SCL workers are responsible for the 1:1 client independent skill building portion of the ABIN model.

### SUPPORT PROGRAM

BCC was extremely fortunate to have two masters level counselors on the team. In the support program, the counselors used their expertise to help clients address psychosocial issues through individual counseling sessions, support groups and Life Skills Classes. BCC counselors supported BCC's concussion service. Highlights of the group work led by BCC counselors include: Understanding Brain Injury, Assertiveness Training, Managing Anger Frustration and Impulsivity, Stress Worry and Anxiety. These classes ran in cycles. In addition to these, the most consistently run groups were the Women's Support Group, Young Adult Group, Caregiver Group and Club Connect. Another popular support group was the Men's Group, which was consistently well attended. The Substance Use and Brain Injury (SUBI Group) is to be reactivated later in 2015 pending the revamping of the curricula. The Young Adult group was active for the most of the year and underwent a curriculum revamp which will be launched

Fall, 2015.

### **COMMUNITY LIVING PROGRAM**

A Community Living Program mandate was provision of electronic compensatory device training to enable clients with cognitive and communication deficits to become more integrated into their communities and thus become more independent. Some clients sought training in basic computer and internet usage. The facilitators developed training manuals tailored to each client's specific learning style, which tended to limit the number of clients admitted into the program. Complementing the compensatory device training, was the identity theft class. This class targeted all areas of life but primarily focused on risks involved with computer usage (e.g., online banking, dating etc.) which reinforced client self-awareness and caution while using / surfing the internet.

With support from the Telus Edmonton Community Board iPads within the Community Living Program were updated and iTunes cards made available to clients to purchase applications for memory retention and verbal communication. BCC hopes to continue this relationship in the 2015-2016 year.

### **COMMUNITY REHABILITATION – Clinical Services**

This program was staffed by an Occupational Therapist who was responsible for carrying our client clinical service provision in the following areas as stipulated by our Alberta Health Services contract: Life Skills Return, Return to Productive Activity, Cognitive Rehabilitation and Perceptual Rehabilitation.

BCC's Occupational Therapist worked extensively with clients one-on-one and as well, led a Wellness Week in May, 2014 for which there was considerable positive client feedback. Amongst other offerings, the 2014 Moving for Brain Health Group, a physical activity group developed from the research literature that concluded that moderate to intense exercise mitigates cognitive impairment, was also well received. The Vocational Assessment Working Group (VAWG), of which the O.T. is a member, was placed on hold in early 2015. An effort will be made to reactivate the VAWG (a collaboration of BCC, Glenrose Hospital, AB Works and Onsite Placement Services designed to assist clients with vocational needs to obtain competitive employment) sometime in 2015-2016.

### **CONCUSSION SERVICE**

In the Fall, 2014 a Concussion Outreach Facilitator joined BCC whose role was to conduct impact testing as well as

provide concussion education to schools and community sports organizations.

BCC's concussion program, which accepted only two clients per month, generated a three month wait list. Management and staff refined criteria for intake. Clients were targeted to receive ten sessions within BCC's counseling program. In collaboration with Dr. Brian Rowe and Dr. Marty Mrazik, BCC attained research funding to reveal outcomes that will further enhance the program and inform the service's practice.

### **VOLUNTEER PROGRAM**

BCC's volunteer base of well over 250 volunteers in all different volunteer categories grew as a result of the expansion of our online program and the increase in the number of events. Through October to December 2014, Brain Care Centre's leisure companion program recorded the highest number of participants since its start in 2012. Four Volunteer Alberta SCiP interns assisted BCC: an event intern (gala specific), a business project proposal intern (ARBI model), an audio visual archivist intern and an accounting assistant intern.

More volunteers supported client services benefitting both clients and staff. They helped run groups, created workshops and assisted with groups. Recruitment was at an all-time high for event volunteers as they signed up to help with BCC's five major events: the BIAM Kick-off Breakfast, the Golf Tournament, the Defying Limitations Gala, the Oilers 50/50 and the Edmonton Casino. They gave wonderful feedback regarding their volunteer experience Brain Care Centre and many asked to be kept on the mailing list for future events.



Edson Staff: Laura (left) and Tannis (right)  
Edson Community Liaison: Charlene (centre)

### **PUBLIC EDUCATION**

Education sessions were provided at an average rate of roughly two per/month throughout BCC's whole region

Edmonton and west to Jasper and included:

- a) Brain Basics geared toward community professionals, caregivers and other individuals seeking a greater understanding of acquired brain injury, its effects and ensuing symptom management.
- b) Concussion Education for community stakeholders and, in particular, minor league sports teams.
- c) Generic presentations which focused on building public awareness of BCC and our service mandate.
- d) Sessions developed to meet particular needs of the

*(Continued on page 15)*





Photo Credit: Chris Scharf

## The 23rd Annual Brain Injury Awareness Month Kick-off Breakfast

On June 5<sup>th</sup>, 2014, the 23<sup>rd</sup> Annual Brain Care Centre BIAM Kick-off Breakfast was held at Edmonton's Kingsway Ramada Conference Centre, and was a hugely successful eye-opener on the impact of concussion. Canadian Olympic doctor, Dr. Connie Lebrun related her professional experience followed by Jennifer Martin's heartfelt revelation of emotional impacts. This event raised \$18,000 for Brain Care Centre.

## The 2nd Annual Brain Matters Charity Golf Tournament

On August 22, 2014, 144 keen golfers teed off at the beautiful Lewis Estates Golf Course in support of BCC's 2<sup>nd</sup> Annual Brain Matters Charity Golf Tournament. Highlights of the bright and sunny day were a trivia contest, live and silent auctions, and prizes for every participating team! BCC raised \$25,000 with support from James H. Brown & Associates, Cummings Andrews Mackay LLP, and Ron Hodgson Auto, as well as many other hole and prize sponsors.



## Jasper in January - #luvurbrain campaign

Brain Care Centre partnered again with Jasper's Marmot Basin in January 2015. Ski-slope education regarding proper helmet fitting and concussion management was provided to skiers and snowboarders. BCC had two great weekends hosting booths, which included fitting helmets in the rentals department and providing educational sessions to the ski patrol and other Marmot Basin staff. We are grateful for the support from ACICR, and Marmot Basin, who made this important education session possible. Congratulations to winner, Jonathon, who won a GoPro camera by posting an Instagram picture of himself wearing a helmet with the hashtag #luvurbrain. Also, a lucky draw winner won a helmet donated by Marmot Basin.

**Over \$88,000 was generated for Brain Care Centre's programs and services through these marvelous events.**

## The Defying Limitations Gala

February 27<sup>th</sup>, 2015, Brain Care Centre hosted the Defying Limitations Gala at the DoubleTree by Hilton West Edmonton. The evening was emceed by Matt Day, a local Edmonton comedian and musician. A commanding performance by Japanese drumming duo Booming Tree Taiko, launched the Gala's fabulous meal. Storyboards around the room featured Brain Care Centre clients, volunteers, and sponsors. The Patrick Hirschi Life Time Achievement Award was presented by Bruce Hirsche, Christine Hirschi, and Samantha Hirschi to Frances Zinger, recognizing her long service on first, the NABIS, and then the Brain Care Centre Board. Following the formal presentation, patrons danced the night away to lively hits performed by Edmonton's most versatile dance band, Aura, while bidding on over 100 silent auction items and three luxurious live auction items. During the evening the fascinating Lewis Lavoie painted an exquisite landscape, which was auctioned off at the end of the night. BCC's programs and services realized over \$18,000 of support from the Gala.



Photo Credit: Scott Mitchell

## Other Community Engagement and Third Party Events

- Edmonton Bike Safety Festival.
- Morinville Bike Safety Fair.
- Brain Injury Awareness Month events In partnership with the Edmonton and area Interagency for Brain Injury / Stroke. This included the social media blitz #whatupwednesday and introduced the hashtag #BIAMyeg2014.
- Redwater Bike Safety Fair.
- Prospects Baseball Club 50/50.
- David Dotto Memorial Golf Tournament.
- Greg Shimizu's Swim Bike Run for Brain Awareness.
- Drayton Valley Drag Race.
- Edmonton Oilers 50/50.
- Annual Mail Out Campaign
- Edmonton Paintball's Zombie Paintball.
- BAM! Fundraising Gala.
- Casino at West Edmonton Mall.



Greg Shimizu races to the finish line in the TransCanada Corp. World Grand Final in Edmonton (top), BCC staff member, Christine, at an Edmonton Prospects Game (middle left), Edmonton Paintball presents Brain Care Centre with a cheque (middle right), children colouring brains at Redwater's Bike Safety Fair (bottom)



## Brain Care Centre Funders



**Thank you to all those who sponsored, attended and supported Brain Care Centre events and fundraisers throughout the year April 2014 to March 2015. Your support is greatly appreciated!**

Robert Hanson - 1650850 Alberta Ltd; Chris Carleton - 7 Degrees Wine/Beer/Spirits; Alberta Health Services; Alberta Human Services - Disability Policy and Supports Division; Rod M. Tweddle - Alberta Primetime, CTV Two Alberta; Anonymous; Norm Assiff - Assiff Law Office; ATCO Blue Flame Kitchen; ATCO EPIC; ATCO Gas; ATCO I-Tek (Wipro Solutions Canada Ltd.; ATCO Pipelines; Gregory Shimizu & Twilla MacLeod - Booming Tree Taiko; Dr. Bruce & Dr. Margaret Ritchie - Bruce Ritchie Professional Corporation; Nancy E. Cumming - Bryan & Company LLP; Jolette Kooger - Caron Transportation Systems; City of Edmonton, Community Services Department; Patrick McGill - Construction & General Workers' Union Local No.92; Marni Kuhlmann - CTV; Cummings, Andrews & Mackay LLP; Grant Vogel - Dentons Canada LLP; Zahra Ismail - Desert Rose Dance Studios Inc.; DFA Tech Inc.; Kelly & Vance Johnner - Diamond J. Ranch; Michael Sharun - Digital Identity Program, Service Alberta; Nathan Stack & Rhonda Fahner - Divine Hardwood Flooring; Brenda Waluk - Edmonton Civic Employees Charitable Assistance Fund; Jeff Kasbrick - Edmonton Glenora Progressive Conservative; Natalie Minckler - Edmonton Oilers Community Foundation; Brittany Anderson - Edmonton Paintball Centre; Corinne Kozak - Edmonton Regional Airport Authority; Edson United Church; Employees' Charitable Donations Fund, Royal Alex Hospital; Joan Guillemette - Gempport Designs Ltd.; Isabel Henderson - Glenrose Rehabilitation Hospital; Wendy Dugas - Glenrose Rehabilitation Hospital Foundation; Greg and Lois Gartner - Greg Gartner Professional Corporation; Kenneth Edwards - HealthPointe Medical Centre Ltd; Connie Borza - J.C.R. Holdings Inc.; James H. Brown - James H. Brown &

Associates; Patrick Picardo and John Belec - Knights of Columbus-St. Christopher Council; Lewis Estates Golf Course c/o Melcor Developments Ltd.; Barbara MacLaren - M.S.B. Consultants; Julian V. Savaryn - Miller Thomson LLP; Waseem Jabre - Mitch's Family Restaurant - 1724009 Alberta Ltd.; Earl Shindruk - Optimax Benefits; Dr. Christopher Paniak - Paniak Psychological Services Inc.; Bruce Hirsche, Q.C. - Parlee McLaws LLP; Sandy Romanow - Peace Hill Insurance; Dan Cote - Rapid Roofing & Repairs Inc.; David Mazzotta - RBC Foundation - Transit #8689; Ron Hodgson - Ron Hodgson Chevrolet Buick GMC; Ronald Jewitt - Ronald J. Jewitt Professional Corporation; John Mulligan - Rotary Club of Drayton Valley; Lennard Kerekanich - Rotating Right; Andrew Otway - Royal Alexandra Hospital Foundation; Ruel Bros. Contracting; Service Canada; Sofra Authentic Turkish Cuisine; TELUS Cares; Telus Communications Inc.; Karen Wells - The Robert Tegler Trust; Karen & Tom Plupek - Thomas E Plupek Professional Corporation; Jeff Desrochers - Travel Guardian Insurance; Wanda Draginda - United Way of AB Capital Region; Dr. Joanne Profetto - McGrath - University of Alberta; Janet Ross - Woman Boutique; Dave Christie - Workun Garrick Partnership Architecture & Int. Design; Teresa Adam; C. Anne Agnew; Audrey Albrecht-Lee; Dagny Alston; Debbie Anderson; Shelley Andrea; Ryan Antonello; Lyle Ayers; Bob and Ida Baer; Mrs. Joan A. Baer; Barbara Baer Pillay; Raymond Baril; Phylis Barrass; Betty Benson; Normand Berube; Angela Biasini; Luigina Biasini; Monique Bielech; Anne Bilinske; Yvon & Lucie Blanchette; Stephanie Boldt; Dale M. Bowes; Stephen and Linda Boyd; D. Ian & Valerie Bradley; Patricia Bradley; Carol Brandly; Ashley & Ryan Brosda; Anne Brown; Gary Cable; Jacqueline Eddy Caithness; Darlene & Robert Caldwell; Charles & Yolanda Campbell; Susan Carnahan; Marilyn Caskey; Kathleen beth de Champlain; Robert & Barbara Chanasyk; Caroline Clark; Linda J. & Frank Clish; Ursula Coenen; Dale Collins; Mark and Alyson

THANKS TO BCC'S FABULOUS DONORS & SUPPORTERS



Connolly; Dr. Greta & Dr. Garnet Cummings; Ronald Cummings; Ella Marie Dauphney; Trevor Dodd; Dolores M & Dwayne Doll; Deborah J. Dover; David Duggan; Marianne Dupuis; Tracy & Michael Edmonds; Murray Ellis; Lorne Ertman; Elliot Gelfand; Devanaiagee George; Naomi Guilbert; Gary Gutscher; Terrin Guze; Inga Hansen; Christine Hanson; Patricia Harrison; Bruce Hettinger; Ada M. Hole; Michelle Hordal; Warren Hurt; Karen Jackie; Bill & Heather Jellis; Soren & Louise Jensen; Moyra Johnson; Shelley Jones; Rakesh Joshee; Janet Juneau; Anne-Marie Kallal; Scott & Tanya Karpysyn; Sharon J. Kassian and William Novasky; Chung Yow & Kazao Kawata; William Kelly; Gong Kiel; Neil Kirkpatrick; Leann Kleckner; Edgar Knobloch; Gerald Kreba; Chantal Laframboise; D Jean Lawson; Dr. James R. Lewis; Carl & Kay Lindemann; Mary Jane Lore; Barbara Losier-Bhatnagar; F. Rose Lupul; Dr. & Mrs. Fred MacDonald; Jean MacKay; Seanna L. Mackenzie; Walter & Emily Maday; Stephen & Lynn Mandel; Mufty & Bill Mathewson; Elizabeth McAfee; Valerie Zupet McIntyre; Blain & or Marcy McIntyre; Jennifer McLean; Lynda McPhee; Kenneth Millar; Tim & Julie Milligan; Cliff Minchau; David Ted Mitchell; Linda Moffatt; Colleen and Brad Mole; Dr. Julianna Nagy; John & Norma O'Connor; Ivan & Cathy Olsen; Esther S. Ondrack; George Owtrim; Judy Pagano; Joan Parker; Josephine Pasieka; Glen Perschbacher; Kevin Peters; Katherine Pisesky; Sharon Pisesky; Mary Ellen Plumite; Rick Pollock; Ralph Pretz; Robert Punder;

Bruce & Ramona Quaale; Gertrude Rabinovitz; Martha Ramirez; Paul Redfern; Elizabeth & Richard Redl; Amy Reiswig; Elaine Roberts; Linda Mae Robillard; Helen Rusich; Bridget Ryan; Gioia Sallustio-Jarvis; Jaclyn Schmidt; Gina Yoshiko Shimizu; Harwinder Sidhu; Ellen Mae Simmonds; Janet Smith; Murray Smith; Nadine Stack; Henry & Hilda Stasiuk; Velma Sterenberg; Theresa Stevens; Susan & Bill Taylor; Hector and Mary Therrien; Geraldine Toller-Lobe; James W. Tremain; Shannan Vereschagin; Douglas Vosper; Lesley Maguire Wabisca; Steve Walker; Violet Watson; Zachary Weeks; Karen Whitham; Albert & Darlene Wong; Andrea Woo; Jack & Susan Wright; Tami Yanish; Etsuko Yoshida; Frances Zinger



#### **Donations were made to honour:**

Rando Ferruccio Biasini; Albert (AL) Buckam; Drew Hutton; Thomas (Tim) Glenn Jarvis; Lawrence & Terry Kallal; Jerry Kolomijchuk; Michael Stack ; Kiki Tremain; Clair Trenchie

#### **Donations were made to BCC through the United Way by:**

John R. Demers; Kathy L. Doak; David M. Duggan; Renee Cecile Halun; Dean McCurdy; Jean Mcleod

For those who may have been missed in these acknowledgements, sincere apologies.

*(Continued from page 11)*

organizations.

BCC's client service staff who served on the education committee, continually fine-tuned the educational material using only the most relevant and recent research material to build the content.

#### **COMMUNITY ACCESS FOR PERSONS IN CONTINUING CARE (CAPCC):**

A 0.5 FTE community access coordinator, with 15 clients in the Edson to Hinton service region, led this cross-disability service. It coordinated community access for those persons aged 18 - 65 who reside in Long Term Care facilities.

#### **INTERAGENCY COMMITTEE FOR BRAIN INJURY AND STROKE:**

Over the course of the year, in collaboration with the interagency committee, BCC worked to develop a proposal to bring a volunteer-driven, clinical rehabilitation program to the Edmonton region. It is modelled after the Association for the Rehabilitation of the Brain Injured (ARBI) near in Calgary. This is still in process.

Effective September 15, 2015

## BOARD

### Board Executive

President  
Stephanie Boldt

Treasurer  
Kaitlin Cluff

Vice President  
Ryan Barry

Secretary  
Fran Zinger

#### Directors

Stephen Boyd

Murray Ellis

Bruce Hirsche, Q.C.

Robert Hirsche

Quentin Ranson, President Elect

## STAFF

Executive Director  
Dr. Garnet Cummings

Associate Executive Director  
Caroline Clark

Operations Manager (Administration)  
Louise Jensen

Office Coordinator  
Shamim Khanbhai

Project / External Relations Team Lead  
and Service Coordinator  
Michael Ryan

Edson Office:  
CAPCC & Service Coordinator  
Tannis Arsenault

Service Coordinator  
Laura See

Edmonton Office:  
Service Coordination and Outreach  
Team Lead / Service Coordinator  
Ashley Brosda

Service Coordinators  
Adam Grimmelt  
Heidi Mast  
Nicole Mitchell (on leave)  
Priya Nash  
Jenny Pasterfield  
Madison Steele (on leave)

Support Services Team Lead /  
Community Living Coordinator  
Jean Roy

Occupational Therapist  
Sidney Shi

Counsellors/Support Facilitators  
Lisa Baranieski (on leave)  
Teresa LaRocque-Walker  
Annelise Welde

Outreach and Volunteer Coordinator  
Jennifer McLean

Program Assistant  
Marisa Henschel

Communications and Events Coordinator  
Christine Hirschi



**Brain Care Centre®**  
*Defy Limitations!*

#229 Royal Alex Place, 10106-111 Avenue,  
Edmonton, Alberta T5G 0B4  
Phone 780-477-7575 Facsimile 780-474-4415  
Website [www.braincarecentre.com](http://www.braincarecentre.com)  
Email [admin@braincarecentre.com](mailto:admin@braincarecentre.com)

Connect with us!



Check out our Website:  
[www.braincarecentre.com](http://www.braincarecentre.com)